

A large, scenic photograph of a waterfall cascading down a steep, rocky cliff. The cliff is covered in lush green vegetation. In the background, there are rolling hills and mountains under a clear sky. A small village is visible on a plateau above the waterfall.

WEEKLY TOURIST ARRIVALS REPORT NOVEMBER 2023



SUMMARY REPORT

Tourist arrivals from 01st to 30th November 2023

2022		2023		Percentage Change (23/22)%
Month	Number of Tourists	Month	Number of Tourists	
January	82,327	January	102,545	24.6
February	96,507	February	107,639	11.5
March	106,500	March	125,495	17.8
April	62,980	April	105,498	67.5
May	30,207	May	83,309	175.8
June	32,856	June	100,388	205.5
July	47,293	July	143,039	202.4
August	37,760	August	136,405	261.2
September	29,802	September	111,938	275.6
October	42,026	October	109,199	159.8
November	59,759	November	151,496	153.5
December	91,961	-	-	-
TOTAL	719,978	-	1,276,951	-



Tourist arrivals | 01st to 30th November 2023

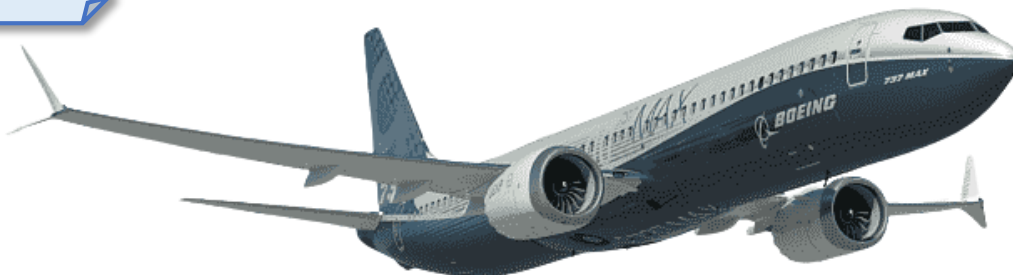
151,496



Daily tourist arrivals, 01st to 30th November 2023

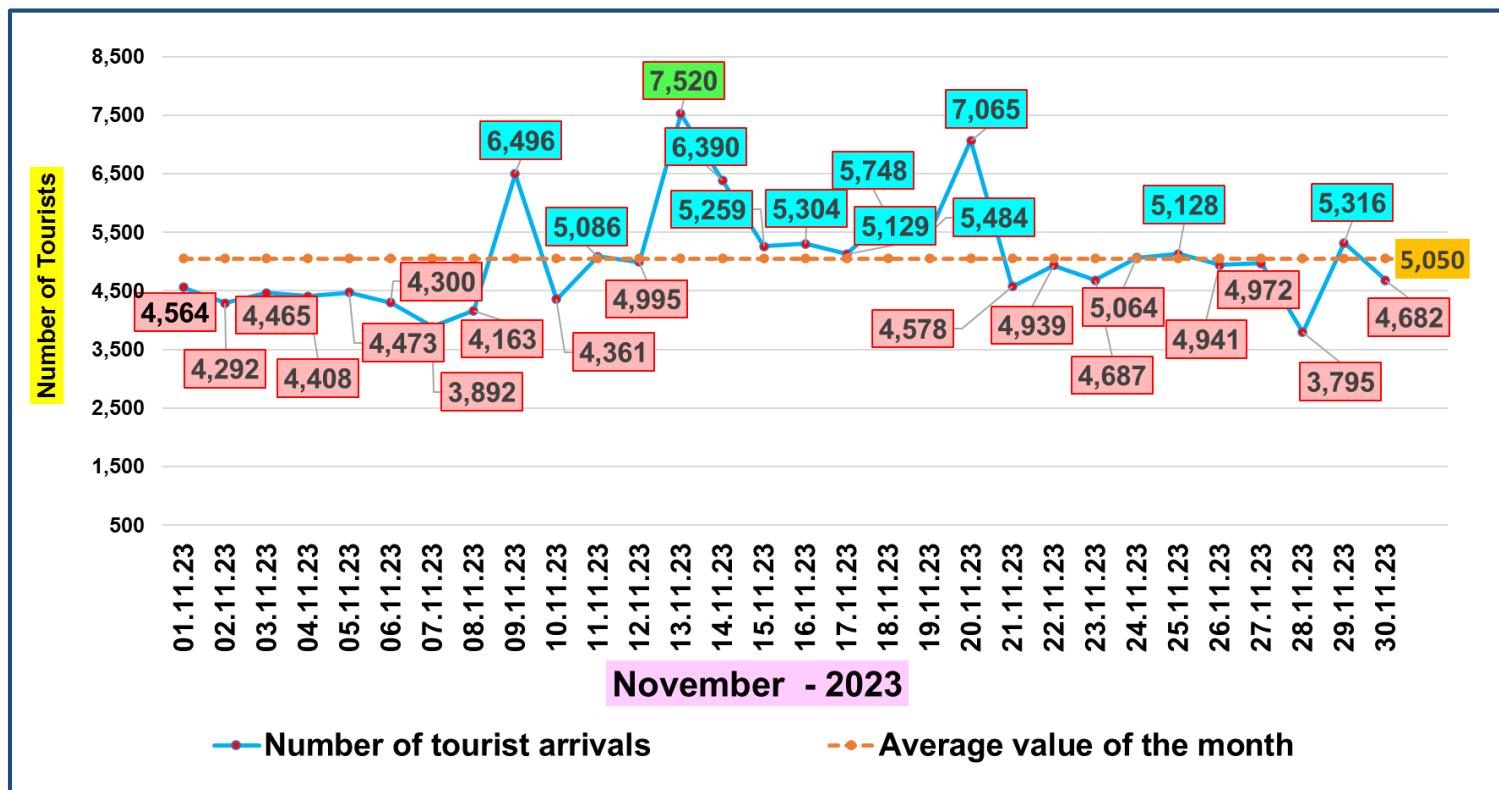
November 2023

 01 4,564	 02 4,292	 03 4,465	 04 4,408	 05 4,473	 06 4,300	 07 3,892	TOTAL (1 st to 7 th) 30,394
 08 4,163	 09 6,496	 10 4,361	 11 5,086	 12 4,995	 13 7,520	 14 6,390	TOTAL (8 th to 14 th) 39,011
 15 5,259	 16 5,304	 17 5,129	 18 5,748	 19 5,484	 20 7,065	 21 4,578	TOTAL (15 th to 21 st) 38,567
 22 4,939	 23 4,687	 24 5,064	 25 5,128	 26 4,941	 27 4,972	 28 3,795	TOTAL (22 nd to 30 th) 43,524
 29 5,316	 30 4,682						

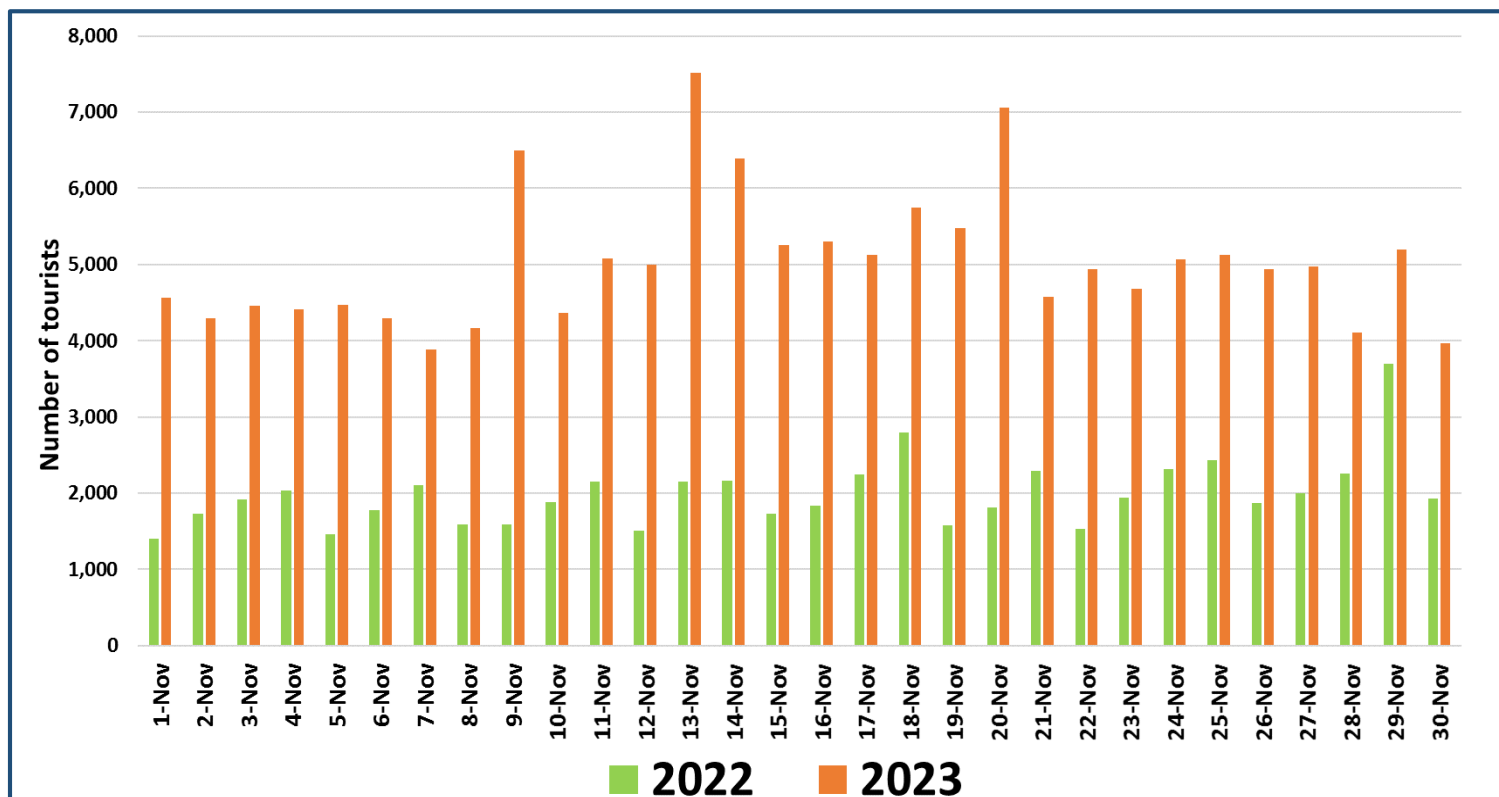




Daily distribution of tourist arrivals, 01st to 30th November 2023

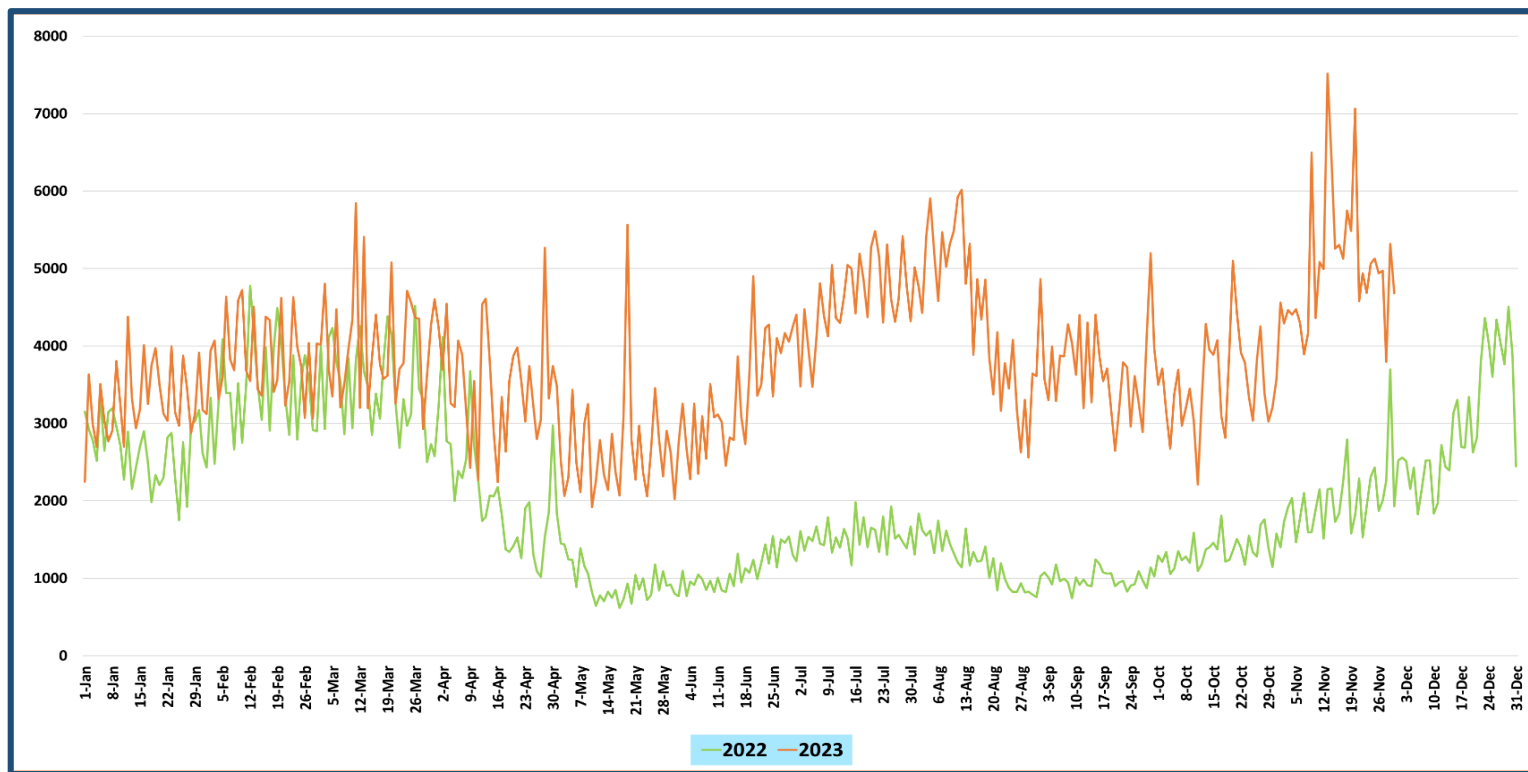


Number of tourist arrivals, 2022 & 2023 (01st to 30th November)

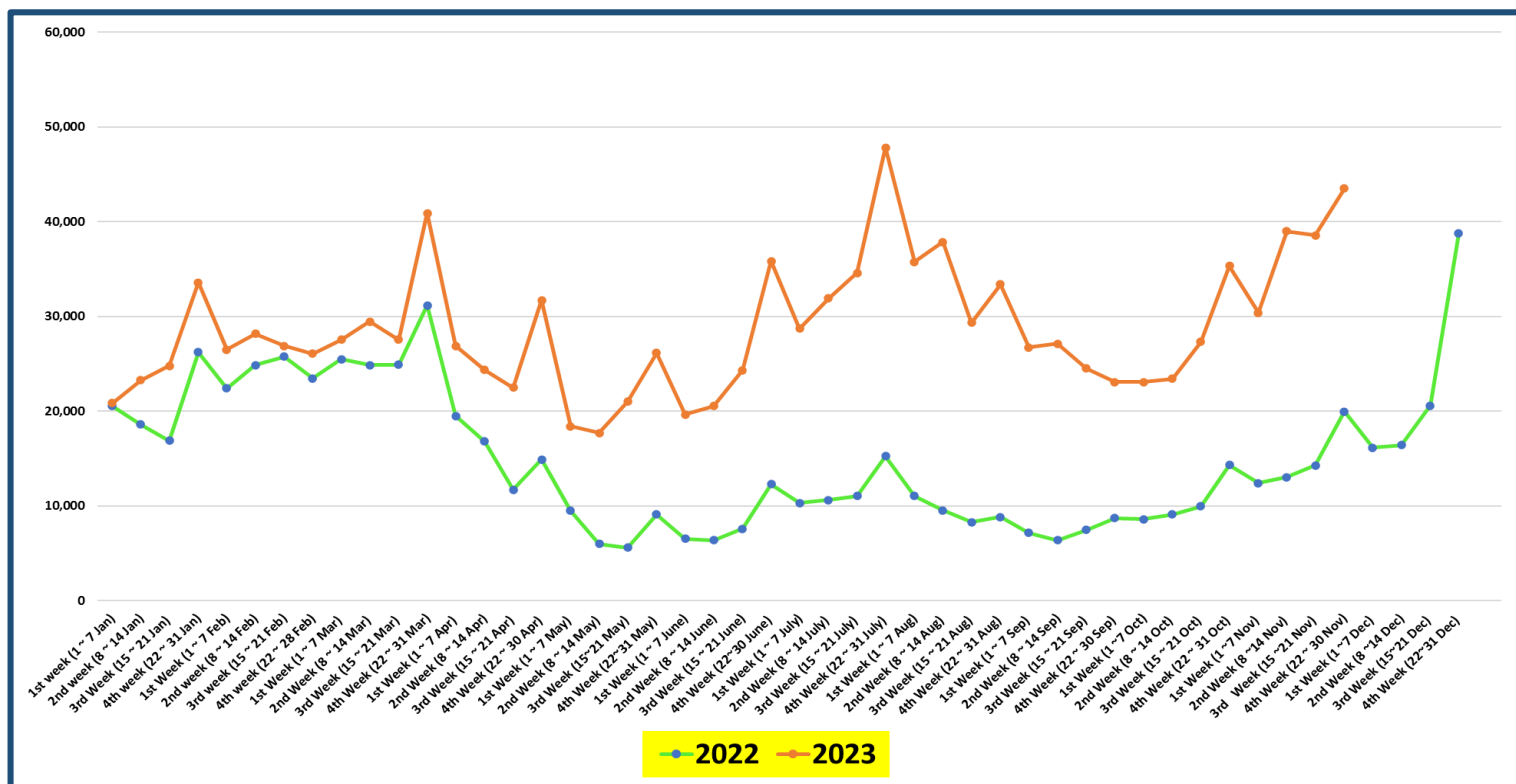




Daily trend of tourist arrivals, 2022 & 2023











Weekly distribution of tourist arrivals, 2022 & 2023





Top ten source markets, 01st to 30th November 2023

Rank		Country	Number of Tourists	Share %
1		India	30,339	20%
2		Russian Federation	24,912	16%
3		Germany	12,331	8%
4		United Kingdom	11,526	8%
5		Australia	7,900	5%
6		China	6,673	4%
7		United States	4,299	3%
8		France	3,882	3%
9		Poland	3,343	2%
10		Japan	2,875	2%
11		Other	43,416	29%
		Total	151,496	100.00